

SCHILLER & SCHILLER

LICENSED AUCTIONEERS & SOLE AGENTS

ARDTARMON CASTLE, BALLINFULL, CO. SLIGO, F91KW88, Ireland

TEL/FAX 00353-71-9163284 email info@irishproperties.com WEB: www.irishproperties.com



Ca. 36.700qm kommerzieller Fichtenwald bei Lisgellock Glebe, Ballinamore, Co. Leitrim
(406JB-FY) 36.700qm/ 3.67 Hektar

Preisvorstellung: € 40.000



Beschreibung:

Kommerzieller Fichtenwald gepflanzt ca. 20 Jahren plus

Lage Lisgellock Glebe, Ballinamore, Co. Leitrim (Wegbeschreibung nehmen Sie den benachbarten Eircode N41X927)

Grenzt die öffentlichen Strasse an

Einiger Windbruch

Parcel Label L1540500026

Grundbuch Folio Part of LM 12393F

Preisvorstellung: 40.000

Besichtigung nach Vereinbarung

Alleinvertretung

SCHILLER & SCHILLER

The above particulars are issued by this office on the understanding that all negotiations are conducted through this office. Every care is taken in preparing particulars but this firm does not hold itself responsible for any inaccuracies. All reasonable offers will be submitted to the vendors.

PSRA No. 002879

VAT ID No IE7435134J

SCHILLER & SCHILLER

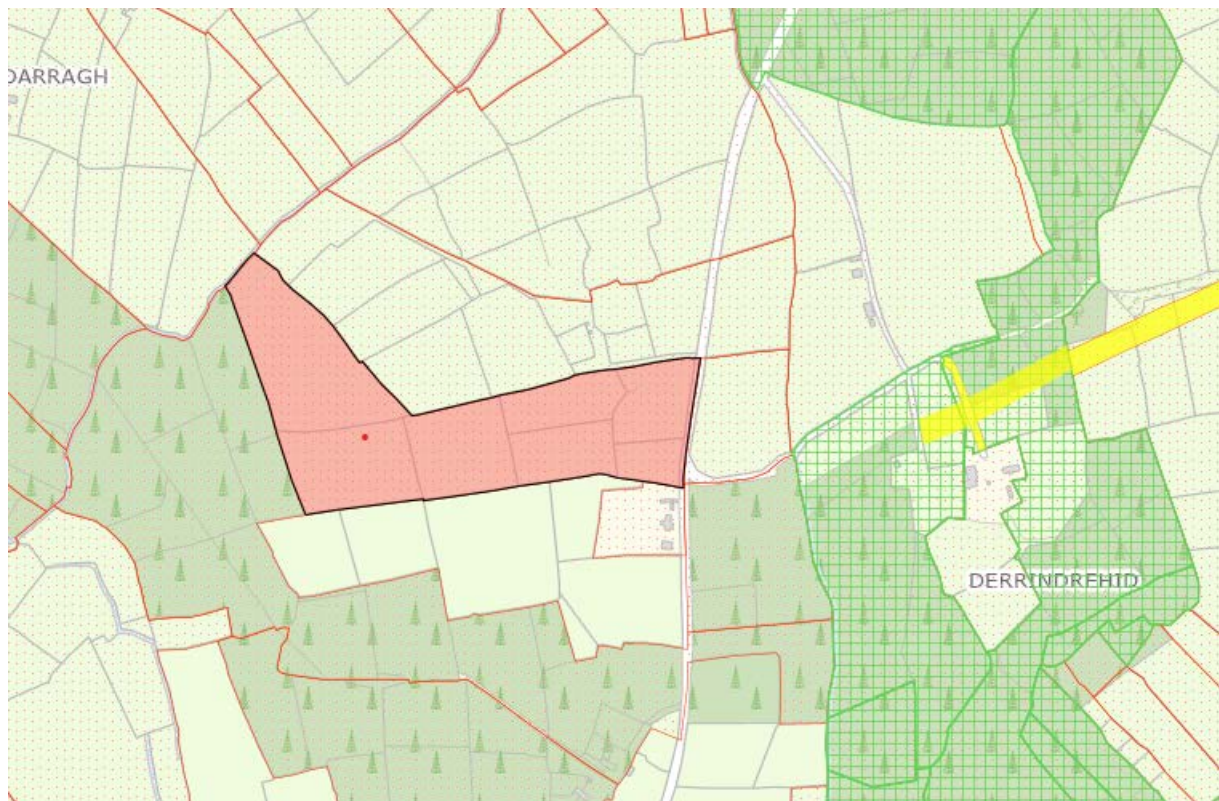
LICENSED AUCTIONEERS & SOLE AGENTS

ARDTARMON CASTLE, BALLINFULL, CO. SLIGO, F91KW88, Ireland

TEL/FAX 00353-71-9163284

email info@irishproperties.com

WEB: www.irishproperties.com



The above particulars are issued by this office on the understanding that all negotiations are conducted through this office. Every care is taken in preparing particulars but this firm does not hold itself responsible for any inaccuracies. All reasonable offers will be submitted to the vendors.

PSRA No. 002879

VAT ID No IE7435134J

SCHILLER & SCHILLER

LICENSED AUCTIONEERS & SOLE AGENTS

ARDTARMON CASTLE, BALLINFULL, CO. SLIGO, F91KW88, Ireland

TEL/FAX 00353-71-9163284 email info@irishproperties.com WEB: www.irishproperties.com



The above particulars are issued by this office on the understanding that all negotiations are conducted through this office. Every care is taken in preparing particulars but this firm does not hold itself responsible for any inaccuracies. All reasonable offers will be submitted to the vendors.

PSRA No. 002879

VAT ID No IE7435134J